

FEBRUARY, 1987

A PLAT OF
STUART WEST, P.U.D.
PHASE III B

SEE SHEET 4 OF 5

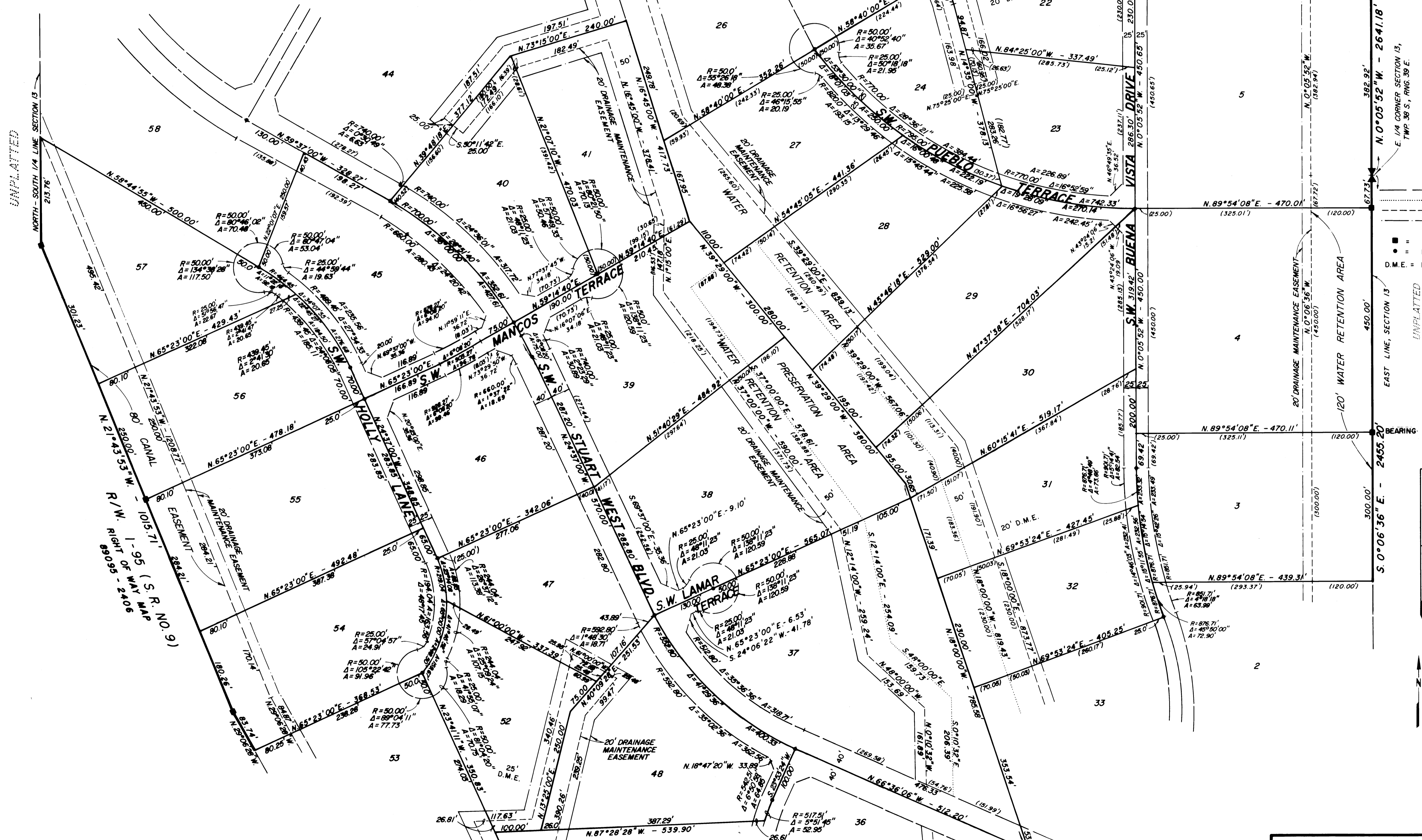
BEING A PORTION OF SECTION 13,
 TOWNSHIP 38 SOUTH, RANGE 39 EAST
 MARTIN COUNTY, FLORIDA

I, MARSHA STILLER, CLERK OF THE CIRCUIT COURT OF MARTIN COUNTY, FLORIDA, HEREBY CERTIFY THAT THIS PLAT WAS FILED FOR RECORD IN PLAT BOOK 10, PAGE 70, MARTIN COUNTY, FLORIDA, PUBLIC RECORDS, THIS DAY OF FEBRUARY, 1987.

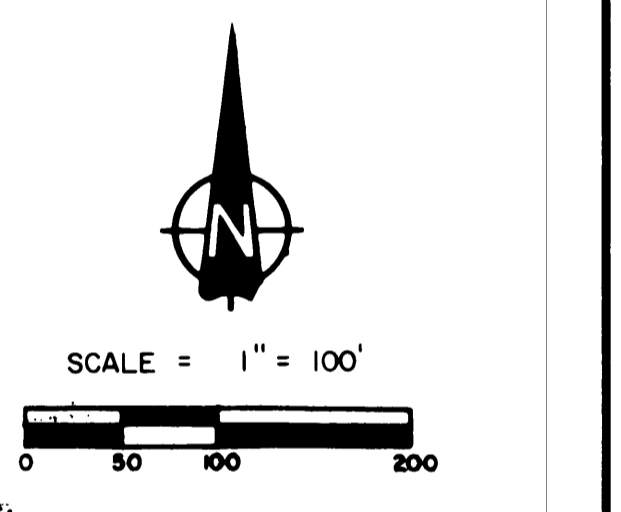
MARSHA STILLER, CLERK CIRCUIT COURT MARTIN COUNTY, FLORIDA

BY DEPUTY CLERK

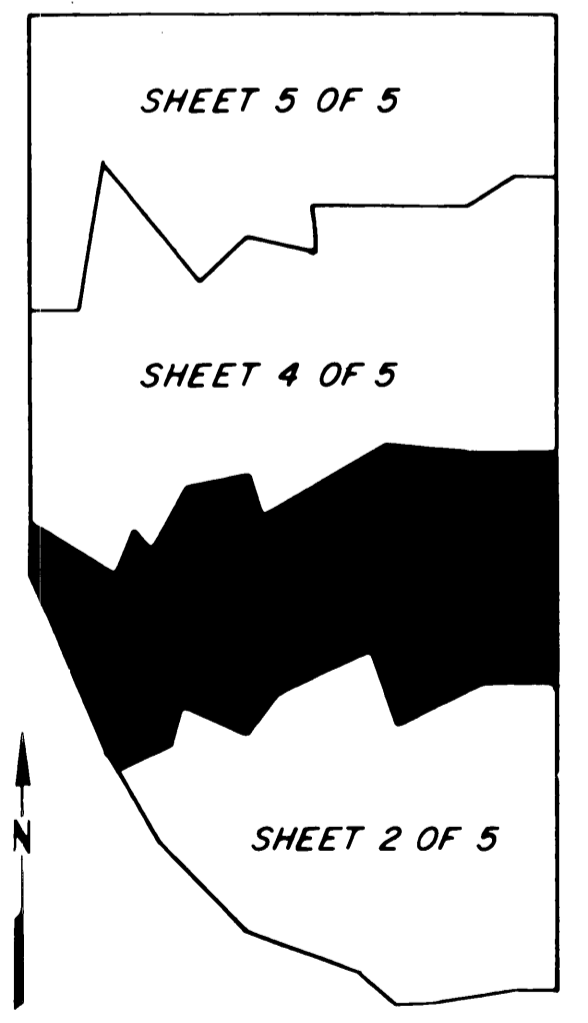
FILE NO.



- LEGEND**
- ACCESS AND UTILITY EASEMENT
 - MARSH PRESERVATION AREA
 - DRAINAGE EASEMENT
 - 20' DRAINAGE MAINTENANCE EASEMENT
 - PERMANENT REFERENCE MONUMENT SET
 - PERMANENT CONTROL POINT
 - D.M.E. = DRAINAGE MAINTENANCE EASEMENT



BEARING BASE: THE SOUTH LINE OF SECTION 13 IS TAKEN TO BE S 88° 50' 33" W AND ALL OTHER BEARINGS ARE RELATIVE THERETO.



KEY MAP

SEE SHEET 2 OF 5

LINDAHL, BROWNING, FERRARI & HELLSTROM, INC.
 CONSULTING ENGINEERS, PLANNERS & SURVEYORS
 P.O. BOX 727
 JUPITER, FLORIDA 33468-0727
 10 CENTRAL PARKWAY SUITE 400
 STUART, FLORIDA 34997
 117 SOUTH SECOND STREET
 FORT PIERCE, FLORIDA 34966